



Installing PayPal Website Payments Pro for use with VP-ASP Shopping Cart

Table of Contents

System Requirements	2
Installation Instructions	2
Step 1. Install PayPal Website Payments Pro SDK	2
Step 2. Register PayPal DLLs.....	5
Step 3. Set up Permissions	9
Troubleshooting.....	13

System Requirements

- Microsoft ASP.NET Framework 1.1
- PayPal Website Payments Pro SDK - <http://altfarm.mediaplex.com/ad/ck/3440-20870-3840-56>

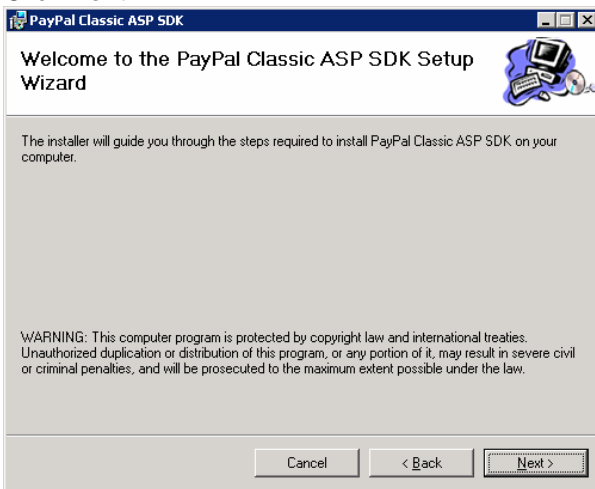
Installation Instructions

Step 1. Install PayPal Website Payments Pro SDK

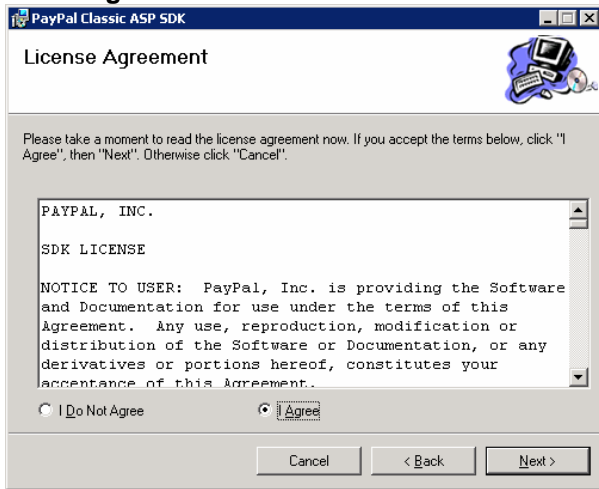
1. Click Next



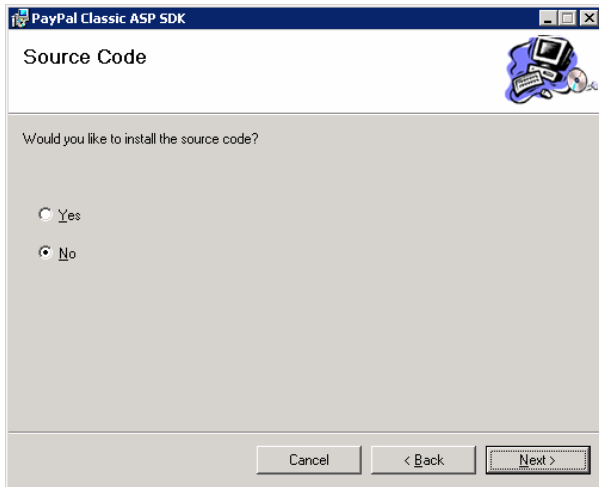
2. Click Next



3. Click **I Agree** button then click **Next**

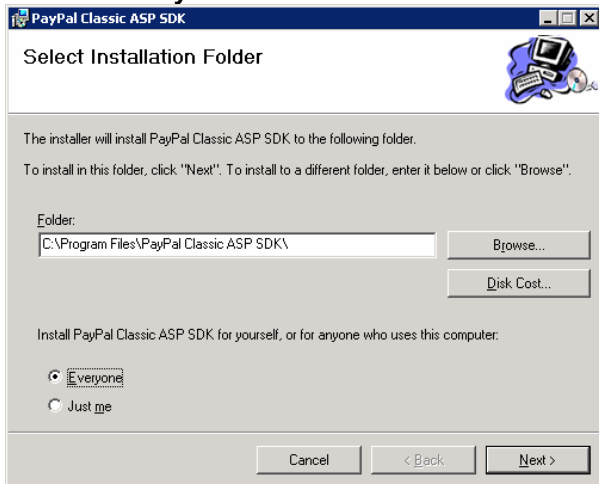


4. Click **No** button then click **Next**

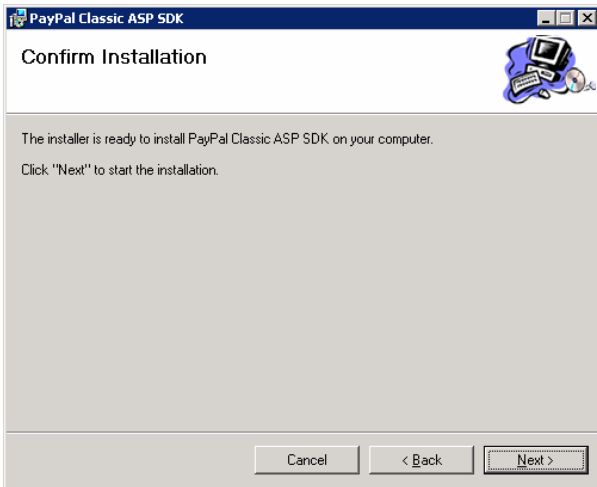


5. Choose folder to install SDK by clicking the **Browse** button, or leave at default (recommended).

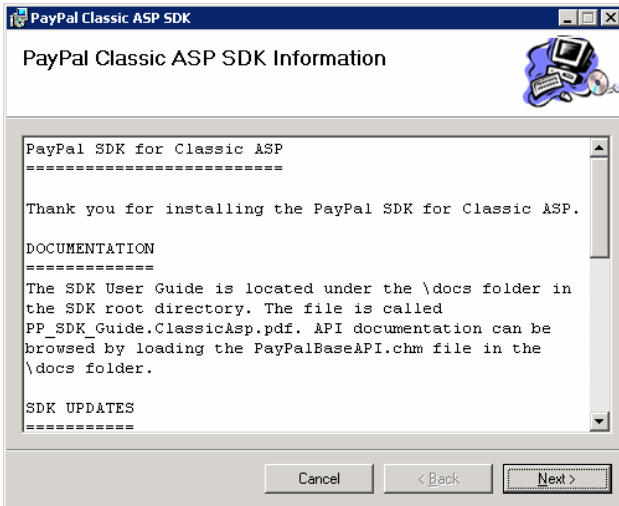
Click the **Everyone** button then click **Next**.



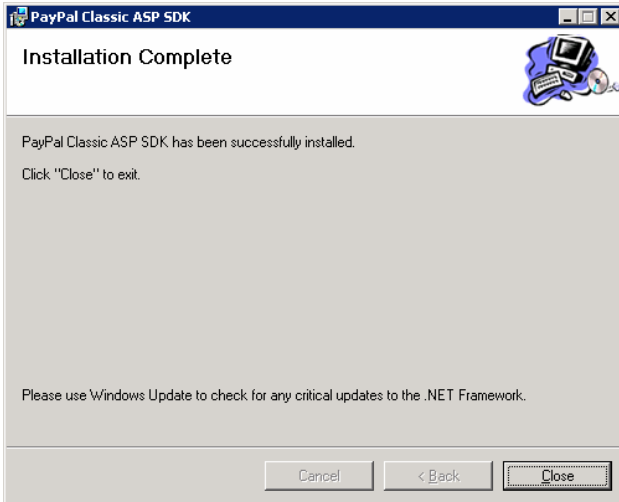
6. Click Next



7. Click Next

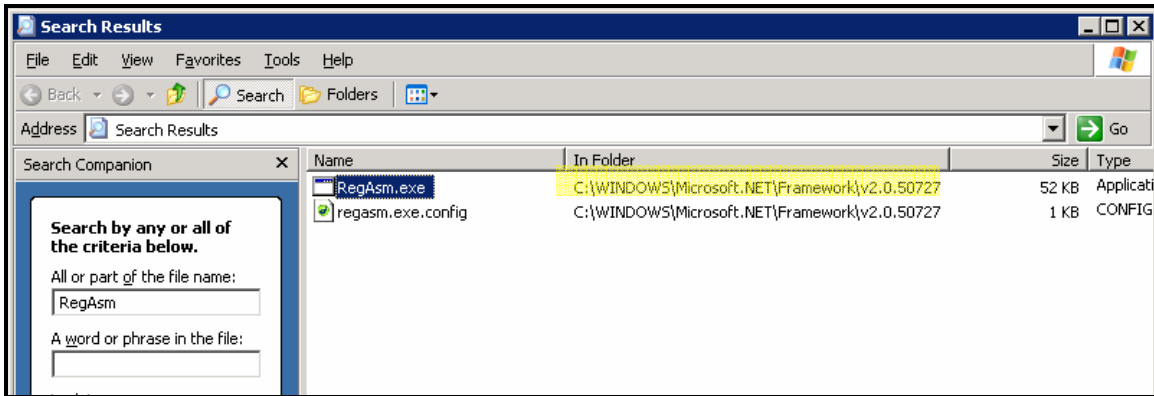


8. Click Close

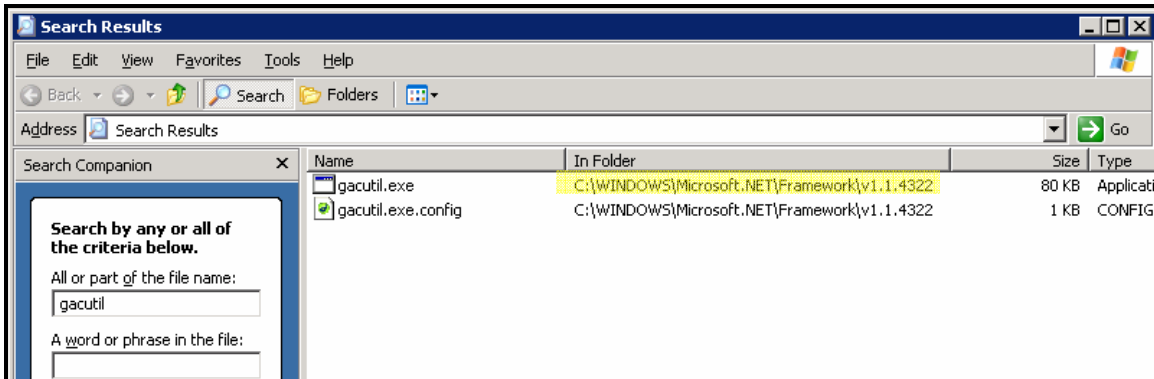


Step 2. Register PayPal DLLs

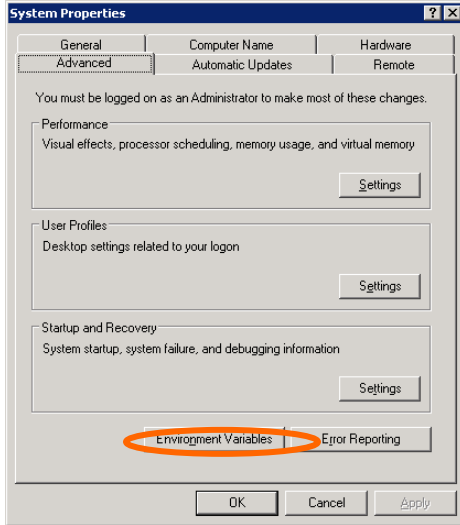
1. Go to the Start Menu and click the **Search** button.
2. Enter the word **RegAsm** in the filename box and click the **Search** button.
3. When the search is complete, note down the folder that the file **RegAsm.exe** is located in.



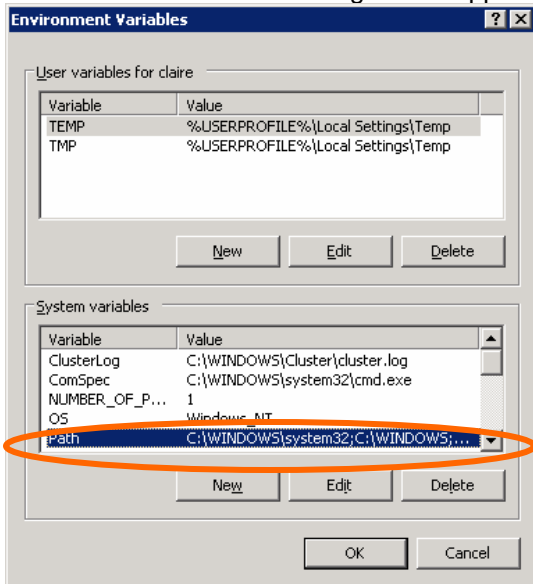
4. Repeat the process above, but for the word **gacutil** instead of RegAsm. When the search is complete, note down the folder that the file **gacutil.exe** is located in.



- Now you need to add these two folders to your System Path. To do this, go to the Start Menu and click the **Control Panel** button. Then click on the **System** button.
- Click on the **Advanced** tab and then click the **Environment Variables** button.



- In the bottom box of the dialogue that appears, click on the **PATH** variable. Click the **Edit** button.

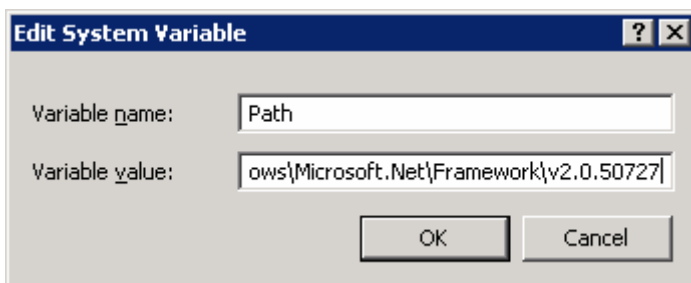


- In the **Variable Value** box, scroll to the end of the value in this box and enter a semi-colon (;) followed by the folder that **RegAsm.exe** is located in.

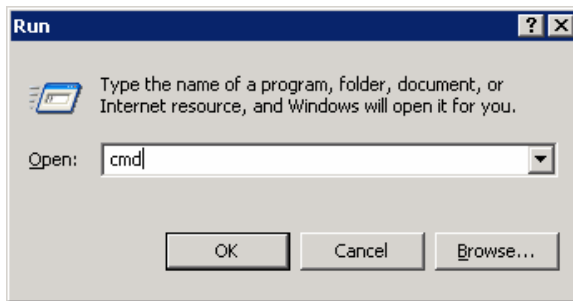
Then, enter another semi-colon, followed by the folder that **gacutil.exe** is located in.

If they are both in the same folder, then you only need to add the path once.

eg. *C:\Windows\System32;C:\Windows; C:\WINDOWS\Microsoft.NET\Framework\v1.1.4322*



- Now you can register the DLLs. Go to the Start menu and click the **Run** button. Enter **CMD** in the box and click **OK**.



- Type in **cd** and then click **Enter**.
- Type in **CD** followed by the path to the folder where you installed the PayPal SDK, then click **Enter** -
eg. cd\program files\PayPal Classic ASP SDK
- Type in **cd\bin** then click **Enter**.
- Type in **regasm paypal_base.dll /tlb:paypal_base.tlb** then click **Enter**.
- Type in **gacutil /i paypal_base.dll** then click **Enter**.
- Type in **gacutil /i log4net.dll** then click **Enter**.

```
C:\WINDOWS\system32\cmd.exe
Microsoft Windows [Version 5.2.3790]
(C) Copyright 1985-2003 Microsoft Corp.

C:\Documents and Settings\claire>cd \

C:\>cd program files

C:\Program Files>cd PayPal Classic ASP SDK

C:\Program Files\PayPal Classic ASP SDK>cd bin

C:\Program Files\PayPal Classic ASP SDK\bin>gacutil /i paypal_base.dll

Microsoft (R) .NET Global Assembly Cache Utility. Version 1.1.4322.573
Copyright (C) Microsoft Corporation 1998-2002. All rights reserved.

Assembly successfully added to the cache

C:\Program Files\PayPal Classic ASP SDK\bin>regasm paypal_base.dll /tlb:paypal_b
ase.tlb
Microsoft (R) .NET Framework Assembly Registration Utility 2.0.50727.42
Copyright (C) Microsoft Corporation 1998-2004. All rights reserved.

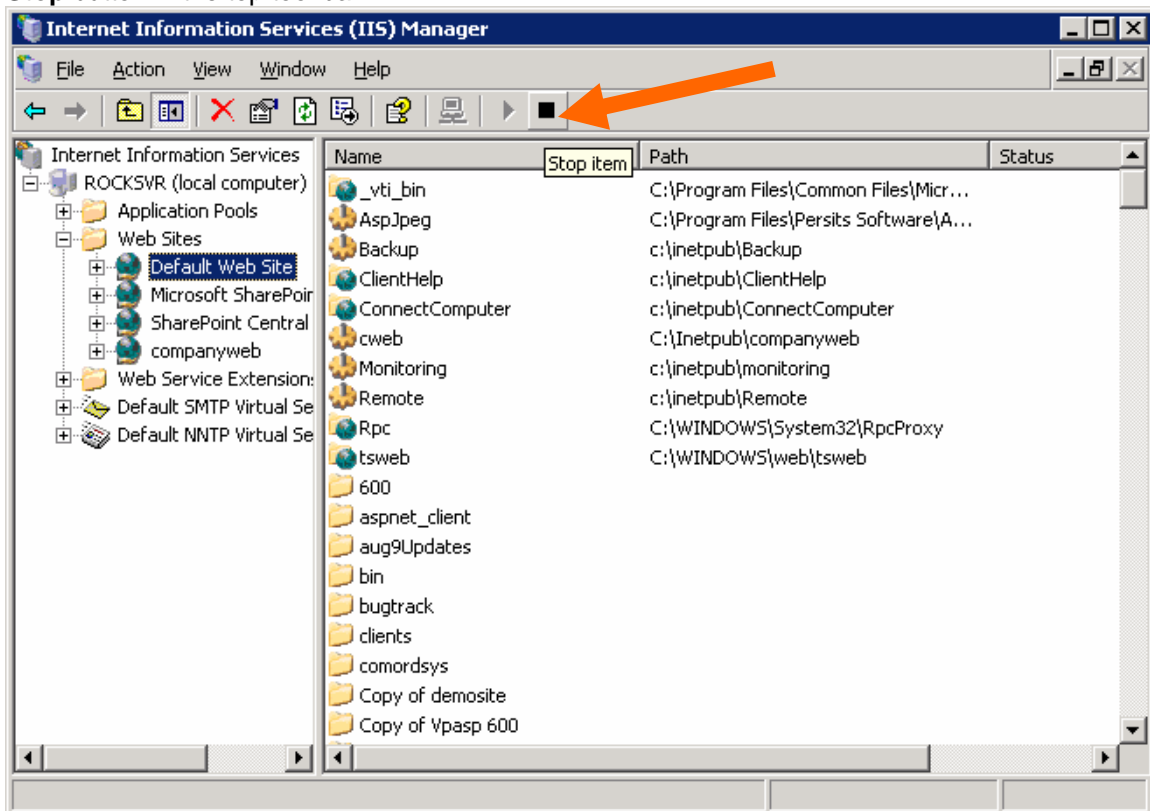
Types registered successfully
Assembly exported to 'C:\Program Files\PayPal Classic ASP SDK\bin\paypal_base.tl
b', and the type library was registered successfully

C:\Program Files\PayPal Classic ASP SDK\bin>gacutil /i log4net.dll

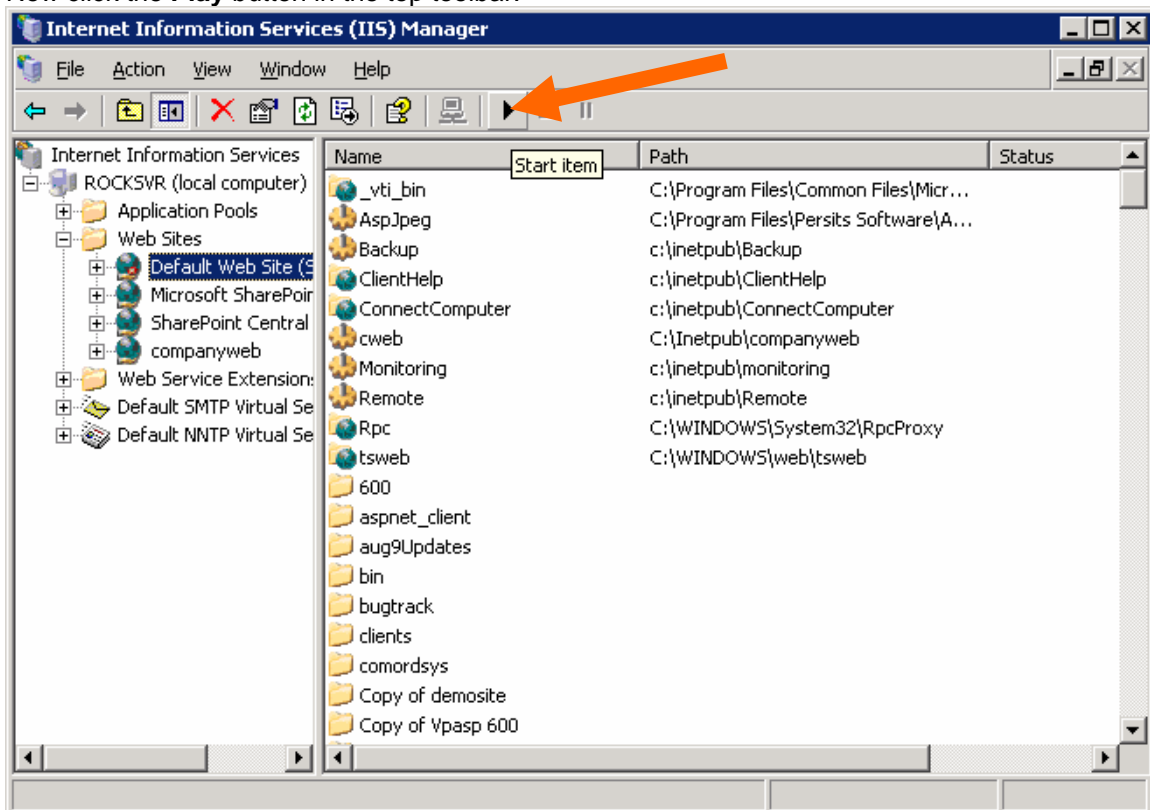
Microsoft (R) .NET Global Assembly Cache Utility. Version 1.1.4322.573
Copyright (C) Microsoft Corporation 1998-2002. All rights reserved.

Assembly successfully added to the cache
```

- Now you need to restart IIS. You can do this by going to the **Start Menu > Control Panel > Administrative Tools > Internet Information Services**.
- Click the **+** button next to the Server, then next to **Websites**. Click on **Default Web Site**. Now click the **Stop** button in the top tool bar.

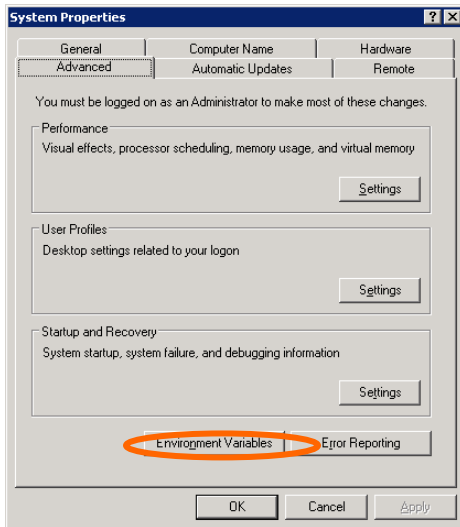


- Now click the **Play** button in the top toolbar.

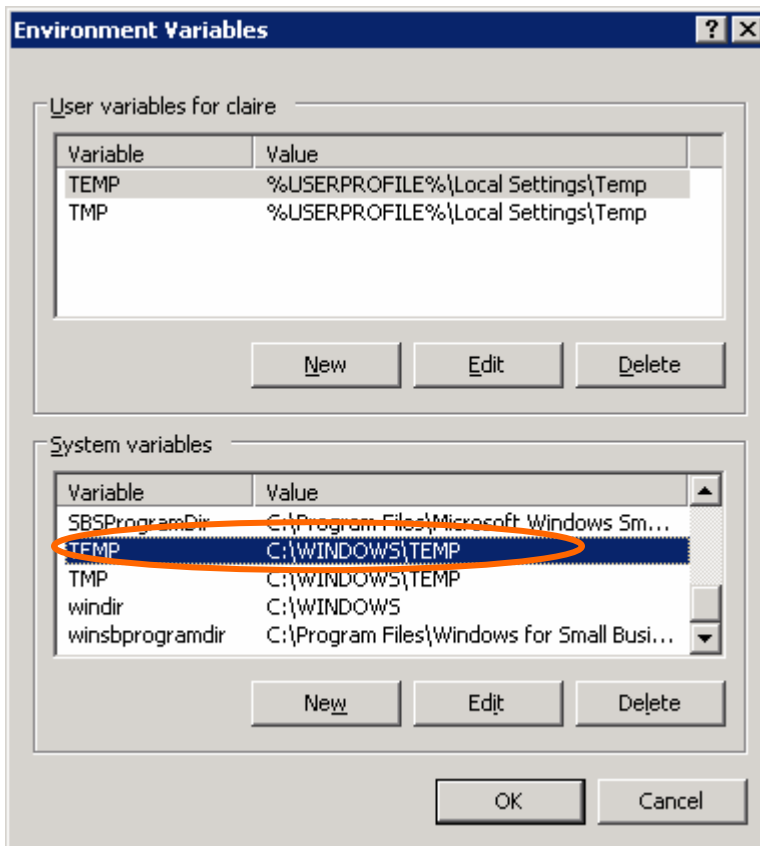


Step 3. Set up Permissions

1. You need to apply **READ/WRITE** permissions on the **System TEMP** folder for the **IWAM_<computername>** user.
2. First, check the location of the **System TEMP** folder by going to the Start Menu and click the **Control Panel** button. Then click on the **System** button.
3. Click on the **Advanced** tab and then click the **Environment Variables** button.

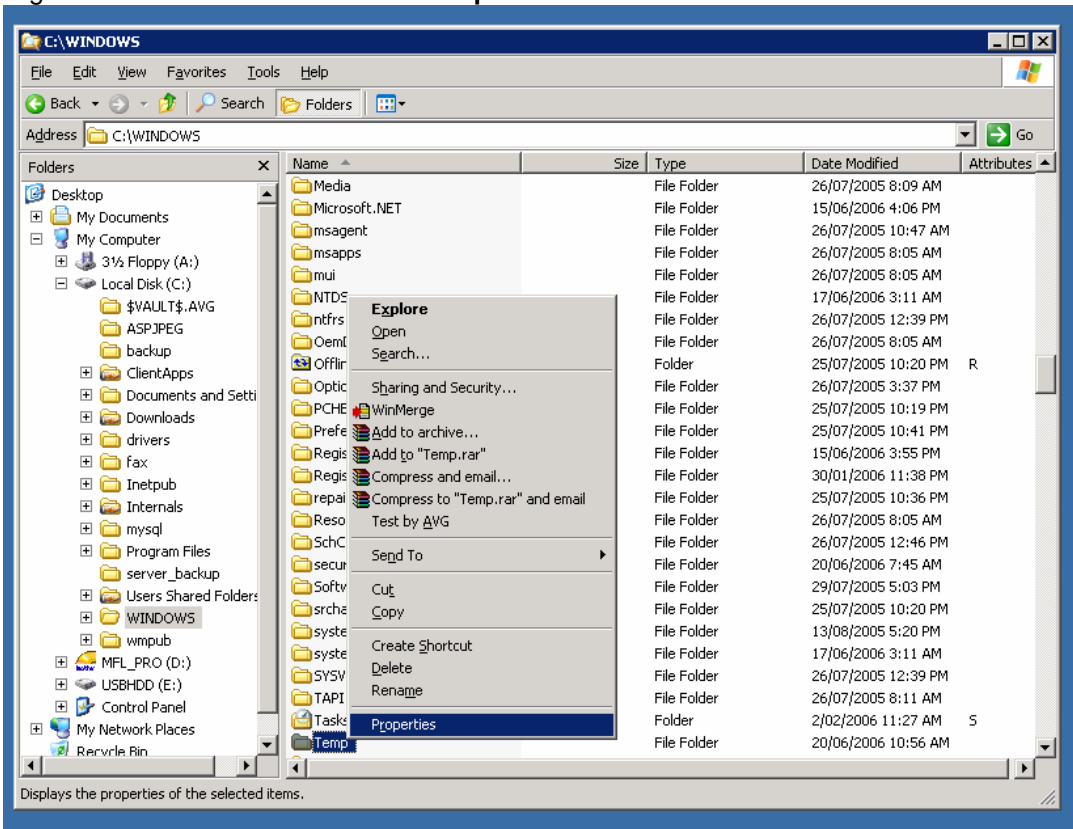


In the bottom box of the dialogue that appears, locate the **TEMP** variable. Note down the name of the folder for this variable.

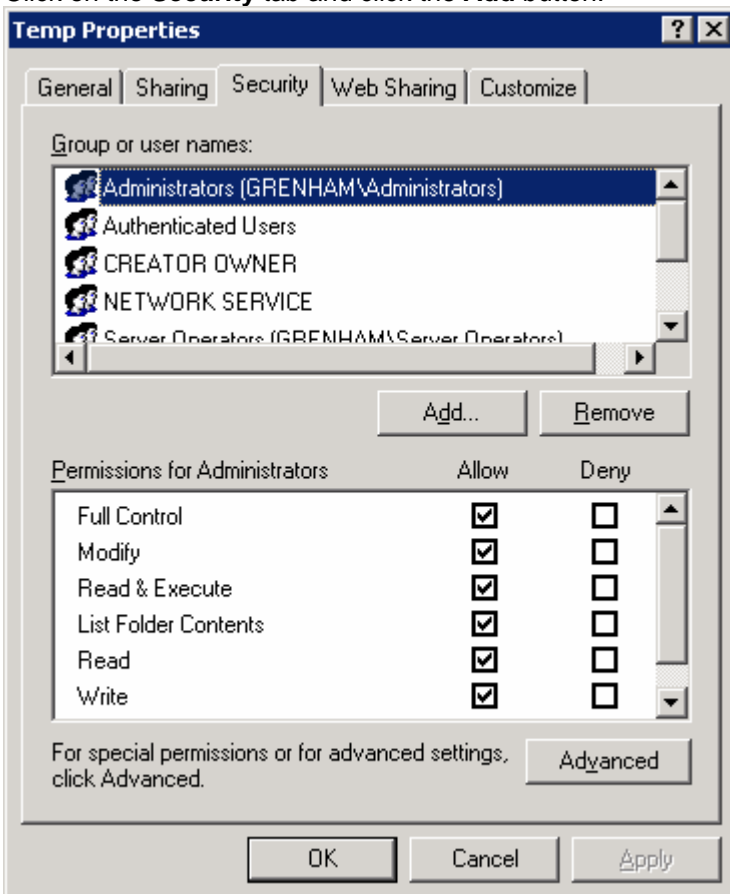


4. You can close this dialogue now, without making any changes. Go to the **Start Menu > Programs > Windows Explorer** and browse to the folder noted down as the **TEMP** folder in the step above.

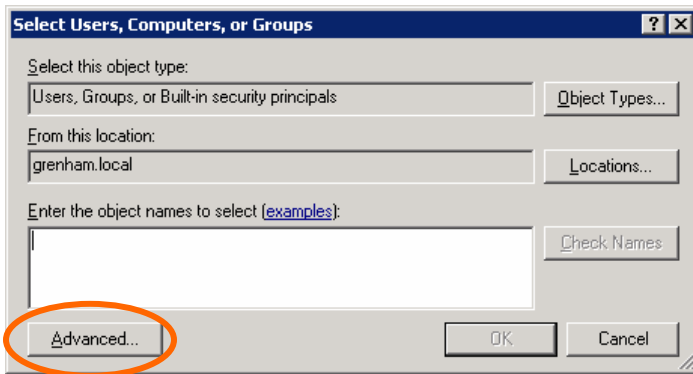
5. Right click on this folder and select **Properties**.



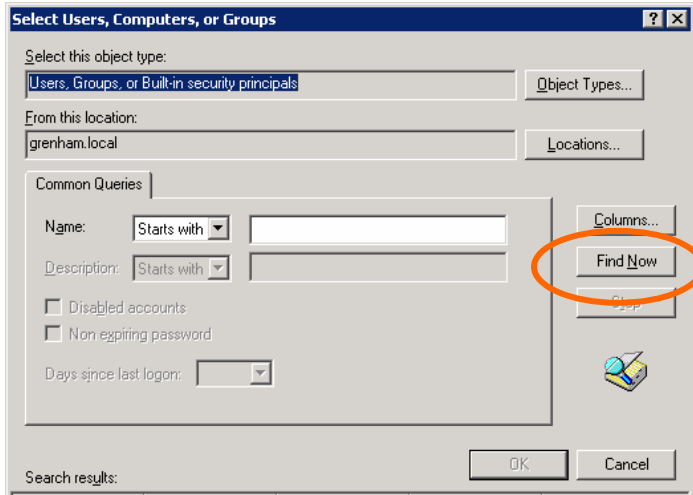
6. Click on the **Security** tab and click the **Add** button.



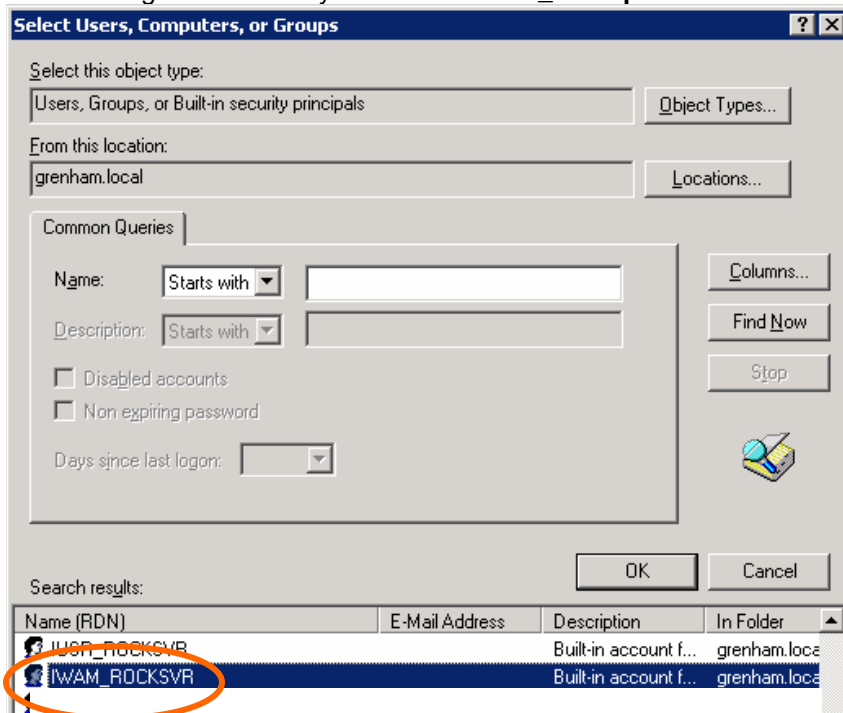
7. Click the **Advanced...** button.



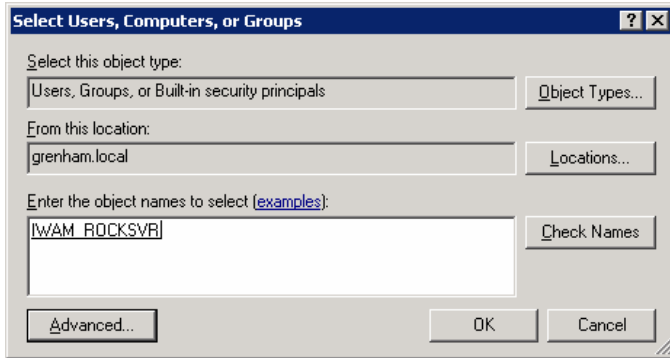
8. Click the **Find Now** button.



9. Scroll through the list until you find the **IWAM_<computername>** user. Double click on this user.

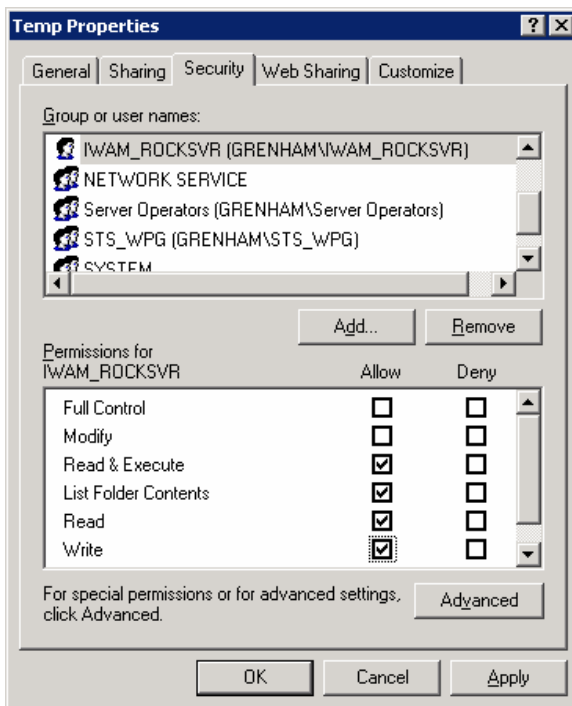


10. Click **OK**.

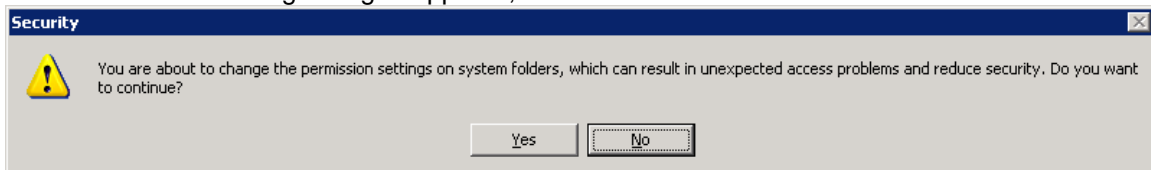


11. Select IWAM_<computername> from the list at the top and ensure the following boxes are checked -

- Read & Execute
- List Folder Contents
- Read
- Write



12. Click **OK**. If the following dialogue appears, click **Yes**.



Please note: If using IIS6 (Windows 2003) and you receive the following error:

```
paypal_base error '80131500'  
Unable to load the binding classes.  
/paypalproapi.asp, line 164
```

Try completing Step 3 again, but instead of giving the permissions to **IWAM_<computername>** try giving them to **NETWORK SERVICE** instead.

Troubleshooting

Error: ActiveX component can't create object: 'com.paypal.sdk.COMNetInterop.COMAdapter2':
https://ppmts.custhelp.com/cgi-bin/ppdts.cfg/php/enduser/std_adp.php?p_faqid=253

Unable to load binding classes:

https://ppmts.custhelp.com/cgi-bin/ppdts.cfg/php/enduser/std_adp.php?p_faqid=207